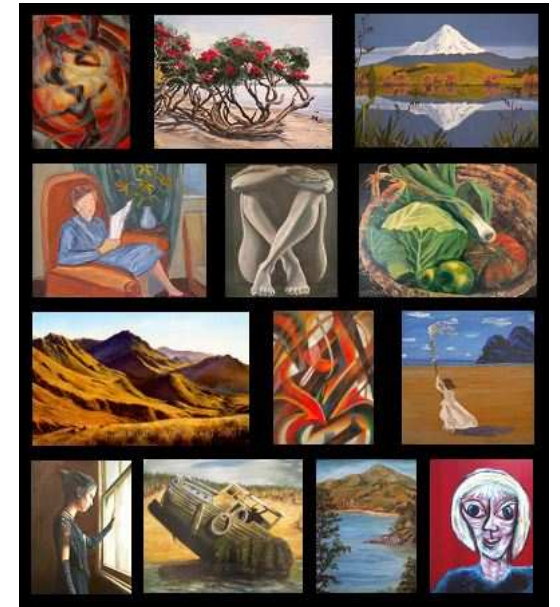


# Wanganui Arts Society



**JOIN US!**

[www.wanganuiartsociety.co.nz](http://www.wanganuiartsociety.co.nz)

[contact@wanganuiartsociety.co.nz](mailto:contact@wanganuiartsociety.co.nz)



[www.wanganuiartsociety.co.nz](http://www.wanganuiartsociety.co.nz)

Trafalgar Place, Cooks Garden

P.O.Box 7256  
Mid Avenue  
Wanganui 4541

[contact@wanganuiartsociety.co.nz](mailto:contact@wanganuiartsociety.co.nz)

To: The Treasurer  
Wanganui Arts Society  
P.O.Box 7256  
Mid Avenue  
Wanganui 4541

## Membership Form

### Wanganui Arts Society



The Wanganui Arts Society was first thought of on the 1st July 1901, in the studio of Mrs. L Jones, who with 4 other artists, decided to form the society to:

**'Encourage art to provide  
inspiration for ourselves and  
those who come after us'.**

The inaugural meeting was held on the 20th August 1901 with those present, including Mrs. Henry Sarjeant, agreeing to become the 'Wanganui Society of Arts and Crafts'.

Within the first 2 months they had a membership of 53.

A month later their first exhibition was held, opening by the Rt.Hon. Richard Seddon. Over 200 paintings were displayed, including works by C.N.Worsley, C.F.Goldie, G.P.Neril and C.Blomfield.

Over the ensuing century and more, the society has evolved and changed shape as membership has both swelled and diminished.

On the 8th of October 2008, a small group of artists of Wanganui gathered to revive the Society in it's more modern form, with aims of mutual positive encouragement, annual exhibitions and various creative activities.

**'As those who come after us'.....  
we remain inspired,  
and hope to inspire those who join us.**

We invite you to join our vibrant group.

#### Membership Fee:

**Single : \$25  
Double : \$30  
Student: \$15  
Supporter: \$20**

Name:

Address:

Phone:

Email:

Website:

Artistic Practice:

Membership Type:

Payment Attached:

P.O.Box 7256  
Mid Avenue  
Wanganui 4541